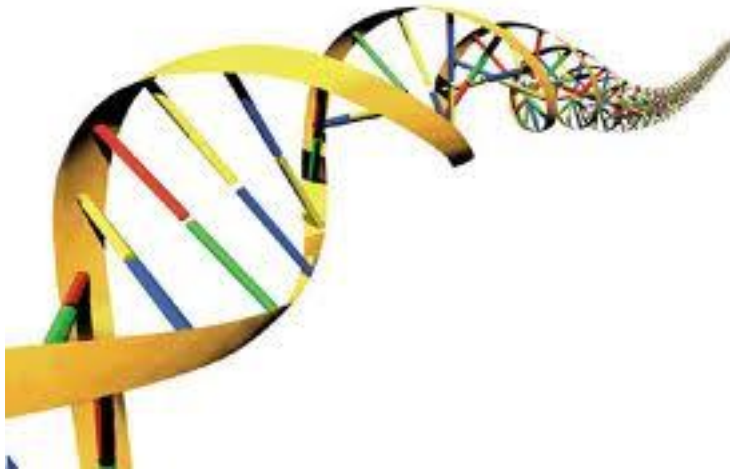


BIOL 101: Concepts of Biology



Why are we here?

Course Objectives: The purpose of this course is to help you:

- Learn, remember and understand the most basic **concepts** and **processes** of biological systems, from cells to ecosystems
- Get **prepared for other courses** in the pre-allied health curriculum, especially Microbiology (BIOL 275) and Anatomy and Physiology (BIOL 251-252)
- Appreciate the **awesomeness** and **gorgeous diversity** of plant, animal and microbial life!

How will we do that?

Course Activities:

- To understand **concepts, processes, and adaptations**, you will read the excellent text we're using
- Both before and after discussing a topic, we'll have homework so both you & I know how well you're understanding that topic
- In class we will work through/ play with many of these concepts and processes in teams, with me guiding, goading, and explaining some things
- To see how the above is going, we will have tests to evaluate your understanding of these concepts and processes
- Ideally, all of the above will contribute to your appreciation of the amazing **diversity** in the living world!

The Details

Face-to-face meeting time: Tuesday and Thursday 1-3 p.m. This is a *hybrid course*, so in addition to the face-to-face time and time spent reading and studying, you will have several additional hours a week spent doing online work (mainly online homework and using the Bb resources).

Instructor: Sarah Leupen

Office #: BIOL 467

Office hours: Tuesday and Thursday 12-1. You may be able to find me at other times as well, or you can call or email to make an appointment to see me outside office hours.

Phone #: 455-2249 (but email is a better way to contact me)

Email: leupen@umbc.edu

Text: Campbell Essential Biology, by Simon, Dickey, and Reece, 5th edition. Pearson, 2013.

Evaluation:

- 40% 2 Tests
- 25% Final Exam (comprehensive)
- 25% Homework (Best 8 of 10)
- 10% Peer review of team performance

Grades are given on a straight-up 90+=A, 80+=B, etc. basis. This way the grade reflects what you actually understand (as much as possible), not what you understand compared to other people, and there is no limit to the number of As, or any other grade—help each other as much as you can!

Teams: The evidence is overwhelming that people learn best by working through problems in teams, rather than being lectured at, even though being lectured at is easier (but boring). I'll still be there to Explain Stuff as needed. To encourage you to take teamwork seriously, you will provide peer evaluations of how prepared, productive and helpful your teammates were, which contribute 10% of each person's grade.

Homework: 10 homework assignments are due throughout the course. These assignments are located on the Blackboard site, and must be submitted there. The homework stimulates you to assimilate material we've just discussed, and motivates you to prepare for class; doing the homework helps you learn enough to do well on tests, and overall, it should raise the level of understanding of biology you can achieve in 6 weeks. The assignments on class days are due early in the day so I can look at them before class and see which ones people are having trouble with-- so I know what needs to be reviewed or emphasized in that day's class. The lowest 2 homework assignments are dropped from the grade calculation.

Late work policy: You are strongly encouraged to show up for all class meetings. If you miss a test for a good reason, I'll give you a make-up test, but only if you notify me in advance. Late homework is 50% off per day late (~5% off per hour late, up to 50%/day).

If you require accommodation for any physical or learning disability, please see me.

Approximate Class Schedule

<u>Date</u>	<u>Reading/Homework</u>
<i>Tues 5/28</i>	Intro to Class; Chapters 1-2
<i>Thurs 5/30</i>	Homework #1 due 8 am Chapters 3-4
<i>Sunday 6/2</i>	Homework #2 due 8 pm
<i>Tues 6/4</i>	Homework #3 due 8 am Chapters 5-6
<i>Thurs 6/6</i>	Test 1 Chapter 8
<i>Sunday 6/9</i>	Homework #4 due 8 pm
<i>Tues 6/11</i>	Homework #5 due 8 am Chapters 9-10
<i>Thurs 6/13</i>	Homework #6 due 8 am Chapters 13-14
<i>Sunday 6/16</i>	Homework #7 due 8 pm
<i>Tues 6/18</i>	Homework #8 due 8 am Chapter 15
<i>Thurs 6/20</i>	Test 2
<i>Tues 6/25</i>	Homework #9 due 8 am Chapter 17
<i>Thurs 6/27</i>	Homework #10 due 8 am Chapters 18-19
<i>Tues 7/2</i>	Catch Up/ Comprehensive Review
<i>Wed 7/3 or makeup day</i>	Comprehensive Final Exam