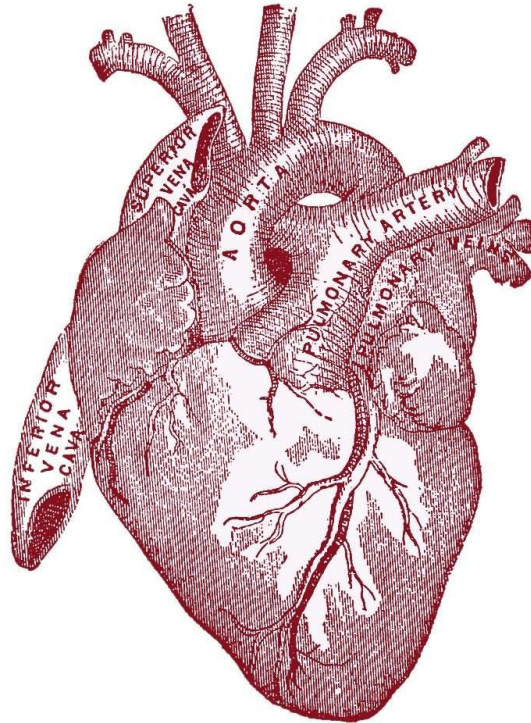


Biology 252 Lab

Anatomy and Physiology II Laboratory

Summer 2015 (Tues & Thurs)



Why are we here?

Course Objectives:

The purpose of this course is to help you:

- **Reinforce** and **deepen** the anatomical concepts learned in BIOL 252 lecture class.
- **Apply** your knowledge of the fundamental **concepts** that underlie the structure and function of the human body in a more **physical, visual, kinesthetic** setting, using physical models, bones, animals, and ourselves.
- Prepare for settings in the **health professions** in which you will be called on to apply your understanding of the human body.
- Continue to develop a “**picture in your head**” of how the inside of the body is structured and works.

How will we do all that?

Course Activities:

- You will **read** and **study** the lab manual ahead of lab and watch videos about up and coming lab content (motivated by **pre-labs** due before each lab), allowing you to arrive at lab prepared.
- Every week in lab, you will do **hands-on activities**, from manipulating (real human) bones and models to cat dissections, with the instructor and TA available to clarify, answer questions, and provide support. You receive points for lab participation.
- Outside of lab time, you will **study** the lab materials, lab manual and other resources, guided by the goals for each lab.
- Learning based on all three of the above activities will be assessed by **quizzes** and **lab practical exams**.

The Details

Lab meeting times in Biological Sciences 005:

- Tuesdays and Thursdays 1-4 pm

You must attend the laboratory session you are registered for.

Mon/Wed people may not attend Tues/Thurs labs and vice versa.

Exceptions may be made for emergencies. Please contact the instructor in advance.

Instructor: Jennifer Hughes

Office #: BS 468

Office hours: Monday and Wednesday 12 noon- 1pm.

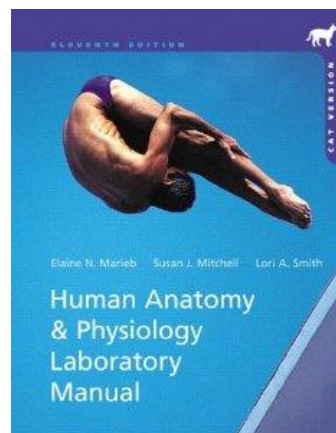
Open lab: Check the door BS 005 for Open Lab times

Phone #: 410-455-2876

My email: jhughes@umbc.edu

Teaching Assistants: Catherine Edson, Stephanie Scensny

Text: [Human Anatomy and Physiology Laboratory Manual, Cat Version](#) by Marieb, Mitchell & Smith, 11th edition. Pearson, 2013.



****YOU SHOULD BRING YOUR LAPTOP TO EVERY LAB****

Evaluation:

	Number of points	% of Total Grade
Practical exams (2)	200	50
Lab quizzes (7 best)	70	17.5
Participation (10 best)	50	12.5
Pre-Labs (8 best)	80	20
Total	400	100

- To get an A, you need 90 % or above (360 or more points out of 400)
- To get a B, you need 80 % or above (320 or more points out of 400)
- To get a C, you need 70 % or above (280 or more points out of 400)
- To get a D, you need 60% or above (240 or more points out of 400)
- Anything below 60% (240 points) is considered an F and a failure of the lab.

There is no curving

The grade is a reflection of how much you learned, not how much more or less you learned than other people did. You should all help each other and work together as a team so everyone can get a great score.

Participation:

Points are allocated for participation. **If you do not show up for lab, you get 0 for participation.** Each student will have a participation score sheet in every lab. As students perform the lab exercises, the TA or instructor will initial their sheet to award participation points and all sheets will be collected before the student leaves lab. Points will be **added** to the participation sheet for simply being present in lab and on time.

Points will be **deducted** from participation score for being late for lab, leaving lab early (classified as leaving before 2 hours of lab have passed) and spending lab time texting, being on non-anatomy related websites on your laptop or doing other non-lab related activities.

Pre-labs:

Prelab exercises are due on Blackboard before lab. Pre-labs completed after lab **are not worth anything at all (0 points)** because the whole point of them is to prepare you FOR lab. The pre-lab quiz on Blackboard locks at the start of lab time and you can no longer access it after that. The lowest one (1) pre-lab score will be dropped in the final grade calculation.

Late work:

Missing a lab is a big loss **for you**. This summer session is accelerated so when someone misses a lab, they *inevitably* do poorly on the section of the lab exam dealing with that topic. If you know in advance you'll miss a lab, let me know and I may be able to organize for you to go to the other section. Missing either of the 2 lab practical exams results in a 0 for that lab practical exam. Missed quizzes can be made up if they were missed for a legitimate reason (documentation required) and made up within 48 hours. One lab quiz will be dropped in final grade calculation. Late pre-labs are not accepted (see above under pre-labs) and missing a pre-lab results in a 0 for that pre-lab.

Policy on Academic Misconduct:

- “By enrolling in this course, each student assumes the responsibilities of an active participant in UMBC’s scholarly community in which everyone’s academic work and behavior are held to the highest standards of honesty. Cheating, fabrication, plagiarism, and helping others to commit these acts are all forms of academic dishonesty, and they are wrong. Academic misconduct could result in disciplinary action that may include, but is not limited to, suspension or dismissal.”
 - ***Cheating:*** Intentionally using or attempting to use unauthorized materials, information or study aids in any academic exercise which includes all forms of work submitted for credit.
 - ***Fabrication:*** Intentional or unauthorized falsification or invention of any information or citation in an academic exercise.
 - ***Plagiarism:*** The deliberate adoption or reproduction of ideas or words or statements of another person(s) as one's own, without acknowledgment.
 - ***Facilitating Others Academic Dishonesty:*** Intentionally or knowingly helping or attempting to help another to violate any provision of the institutional policy on academic dishonesty.
- Any evidence of cheating will be dealt with firmly under the Policy for Resolving Cases of Academic Misconduct. To read the full Student Academic Conduct Policy, consult the UMBC Student Handbook or read this PDF document: http://www.umbc.edu/undergrad_ed/ai/documents/ACC2011.pdf
- If you are observed cheating during an examination, your answer sheet will be confiscated and you will receive a score of zero for the exam. Furthermore, the Chair of the Academic Misconduct Committee will be consulted regarding appropriate penalties including, but not limited to, a grade of “F” in the course. This policy applies to all activities in the course.
- Having a cellphone out during an exam is considered cheating. Cell phones must be silenced and kept in your bag during exams.

Students with disabilities:

UMBC is committed to eliminating discriminatory obstacles that may disadvantage students based on disability. If you have a disability and want to request accommodations, contact Student Support Services (SSS). If you are eligible for accommodations for this class, make an appointment to meet with me to discuss your SSS-approved accommodations so I can make sure you have what you need to be successful in the class.

Schedule and Evaluation Scheme

<u>Day</u>	<u>Date</u>	<u>Lab</u>	<u>Exams</u>	<u>Points</u>
Tues	Jul 7th	Lab 1: Endocrine system		
Thurs	Jul 9th	Lab 2: Blood (PL*)	Qz on lab 1	10
Tues	Jul 14th	Lab 3: Heart (PL*)	Qz on lab 2	10
Thurs	Jul 16th	Lab 4: Blood vessels (PL*)	Qz on lab 3	10
Tues	Jul 21st	Lab 5: ECG and BP (PL*)	Qz on lab 4	10
Thurs	Jul 23rd	Lab 6: Lab practical 1	LP 1	100
Tues	Jul 28th	Lab 7: Respiratory system (PL*)	No quiz	
Thurs	Jul 30th	Lab 8: Digestive system (PL*)	Qz on lab 7	10
Tues	Aug 4th	Lab 9: Urinary system (PL*)	Qz on lab 8	10
Thurs	Aug 6th	Lab 10: Urinalysis (PL*)	Qz on lab 9	10
Tues	Aug 11th	Lab 11: Reproductive system (PL*)	Qz on lab 10	10
Thurs	Aug 13th	Lab 12: Lab practical 2	LP 2	100
Grade calculation		Pre-labs (8 best)	80	
		Lab quizzes (7 best)	70	
		Participation (All 10)	50	
		<u>Lab practical exams</u>	<u>200</u>	
		Final grade out of:	400	

*PL = There is a pre-lab for this lab worth 10 points on Blackboard which must be completed before start of lab.

Important note

To avoid having lecture and lab finals on the same day, students registered in the Tues/Thurs lab group can choose when they want to take their Lab Practical 2.

The options are:

Wednesday Aug 12th at 2pm

As scheduled above: Thursday Aug 13th at 1pm

Open lab times will be available to give you time outside lab with the models and TA's

Come to study together or to ask questions of your TA's

See schedule posted on door of BS 005